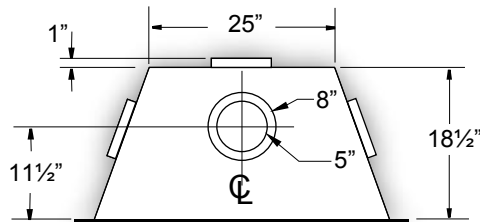
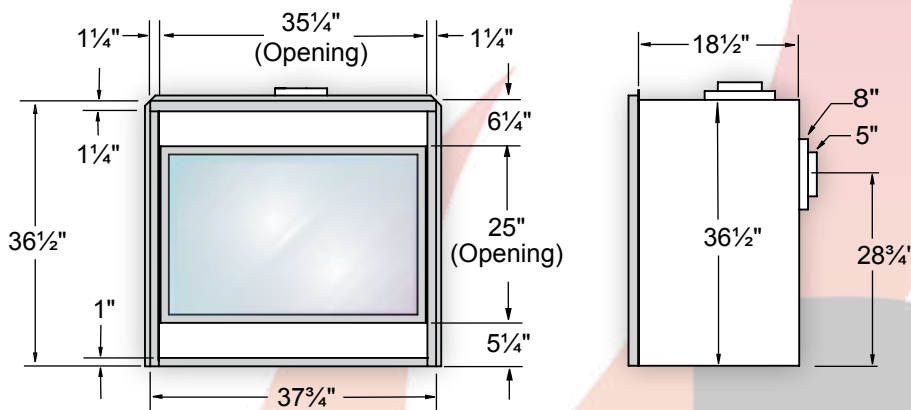


## *H38DF Reference Dimensions*



**Top View**



**Front View**

**Side View**

**Models Included:**

H38DFN, H38DFL, H38DFNE, H38DFNI, H38DFL,  
H38DFLE, H38DFNA, H38DFLA, H38DFLI,  
HL38DFN, HL38DFL, HL38DFLE, HL38DFLI,  
HL38DFNI, HL38DFLI, HR38DFN, HR38DFNI,  
HW38DFN, HW38DFNL, HW38DFNI, HW38DFLI

Consult the owner's manual for complete installation instructions and proper clearances to combustible surfaces prior to installing fireplace.  
All specifications, framing dimensions, product designs, materials and colors are subject to change without notice. The actual flame pattern and color may vary slightly from the illustrations. Diagrams and illustrations are not to scale.

**Warranty:** The manufacturer warrants this fireplace to be free from defects in materials and workmanship at the time of manufacture. There is a limited 10 year warranty on the firebox; 5 year limited warranty on the burner and 1 year limited warranty on the pilot burner assembly and fan motors (if included). The valve carries a limited 1 year warranty unless otherwise specified in the installation manual. Glass, plated/painted finishes and refractory lining are exempt.

